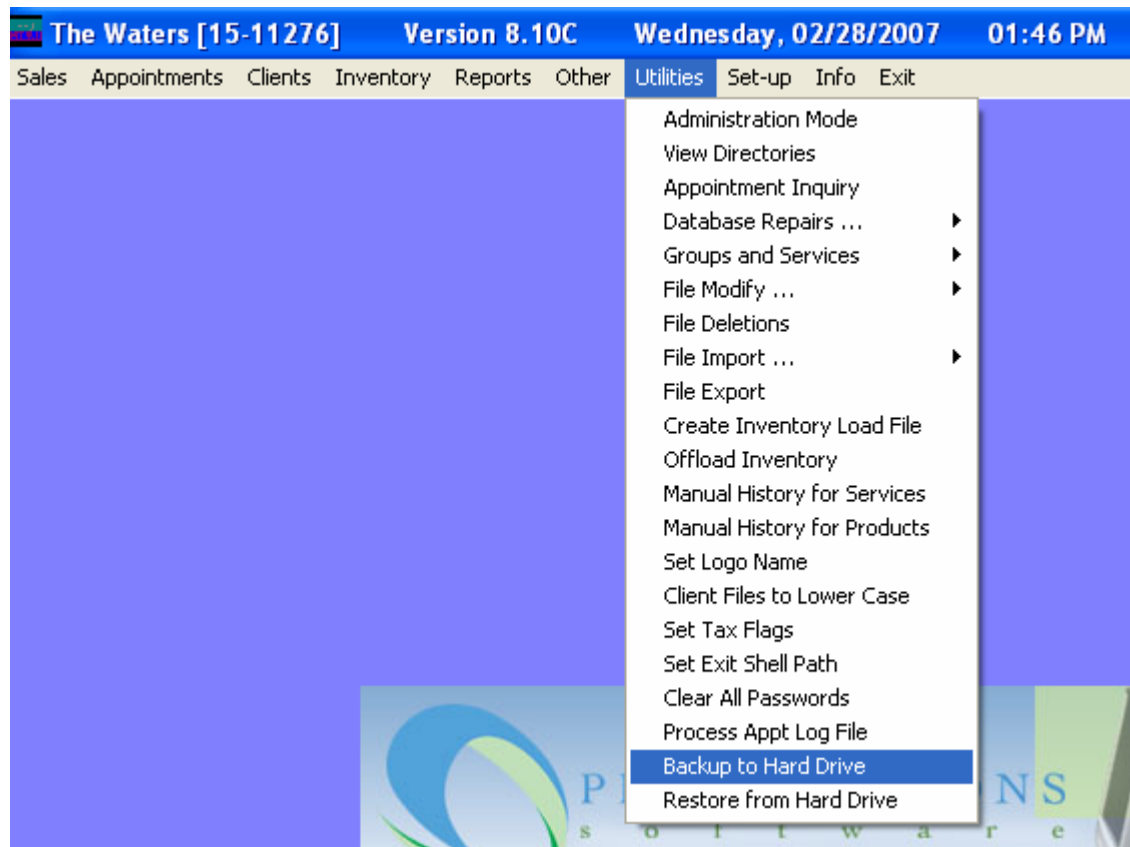
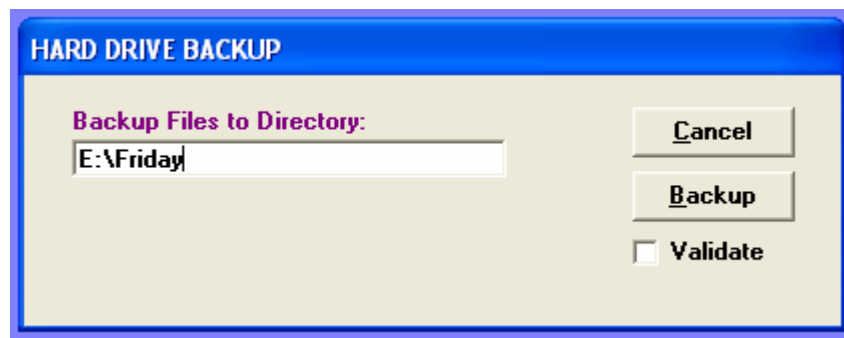


How to perform a backup:

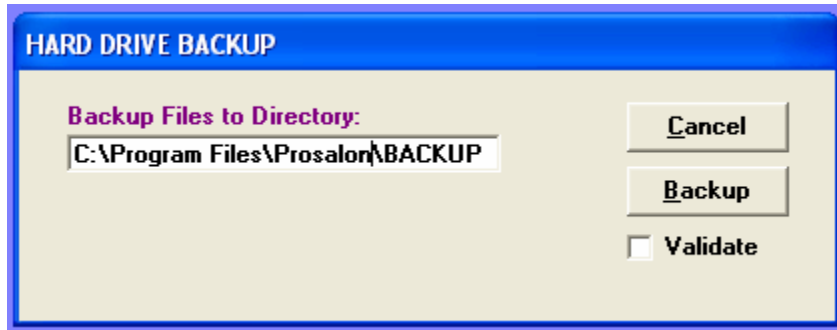
1) Go to Utilities – Backup to Hard Drive (Whether you are backing up to an external device or hard drive).



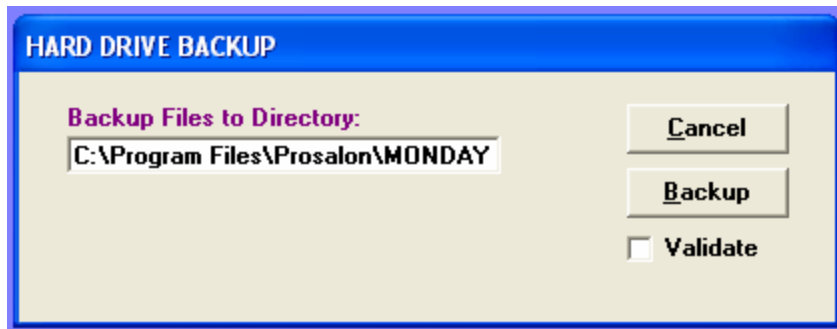
2) If you wish to backup to the hard drive skip to step 3). If you wish to backup to an external source, like a flash drive (This is highly recommended), you can change the directory in the backup window to the drive letter that is created when you insert the flash drive to your PC (this letter will be displayed in the 'My Computer' window). After the drive letter enter in the name of the folder that will be created with the DATA in it eg the day of the week.



3) You be asked to enter in the directory path where the backup will be created (the default path is C:\Program Files\Prosalon\BACKUP, unless Prosalon is installed to another location).



4) It is highly recommended that a backup be done each night. If it is, as an added level of security you change the path to reflect the day that the backup is being done (example below).



By doing the backups this way you will have a good copy of your DATA, one for each day of the week. When Monday comes around again we will over write last weeks DATA, with a good copy for every day in between.

This document was created with Win2PDF available at <http://www.daneprairie.com>.
The unregistered version of Win2PDF is for evaluation or non-commercial use only.