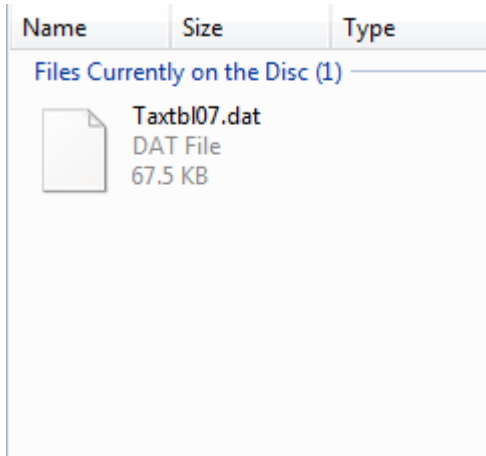
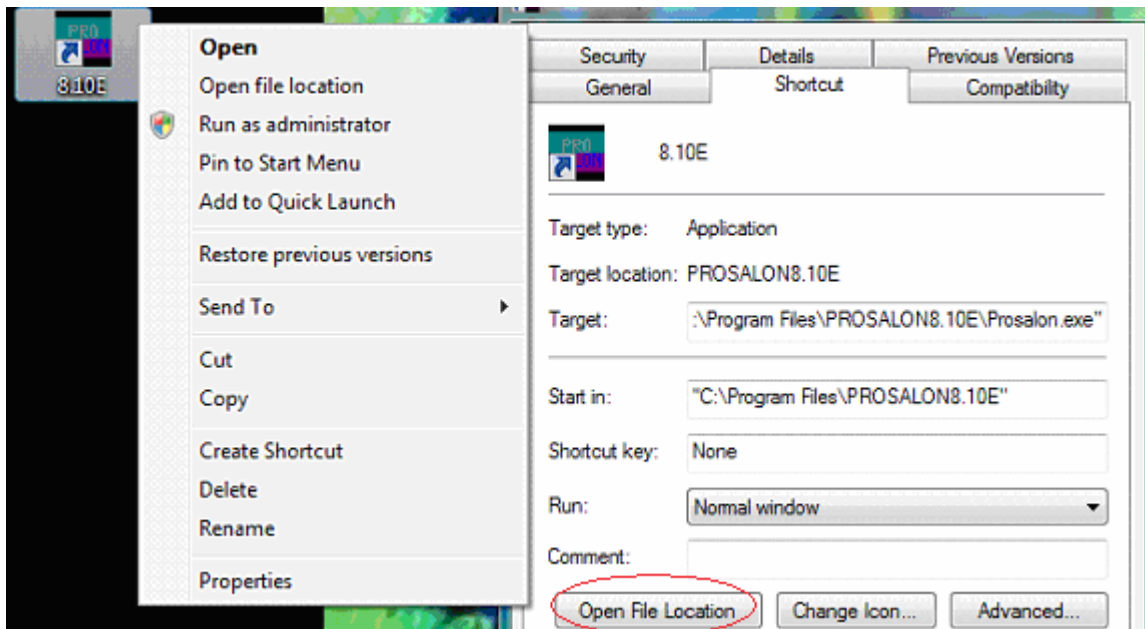


Tax Table

1) Once you purchase a tax table and have been sent out the CD then enter it into the CD-ROM drive. It will start an auto run and the Tax Table file will appear.



2) Right click on your Tax Table and press copy. Now minimize this screen and right click on your Prosolutions icon. Now left click on properties and open file location.



3) This will take you to your Prosolutions folder. In here double click on your data folder.

Name	Date modified	Type	Size
DATA	4/10/2007 1:00 PM	File Folder	
Waters8	4/2/2007 9:06 AM	File Folder	
AGREEMNT.DAT	4/2/2007 9:05 AM	DAT File	1 KB
APGRPSET.DAT	4/9/2007 9:46 AM	DAT File	0 KB
bummer	2/14/2006 9:46 AM	Wave Sound	38 KB
converter	8/20/2004 3:30 PM	Application	56 KB
Ctmelody	7/20/1998 2:00 AM	Wave Sound	684 KB
DEMOLOAD.YES	4/9/2007 8:46 AM	YES File	1 KB
DEMOPIC	7/15/1993 12:37 PM	Bitmap Image	37 KB
ERRORMSG.SYS	4/3/2007 2:49 PM	System File	0 KB
ERRORMSG8.DAT	8/17/2006 7:00 AM	DAT File	576 KB

4) Once in here right click on an empty space and click paste. Now the Tax Table is in the data folder.

Name	Date modified	Type
APPTS	4/9/2007 8:45 AM	File Folder
75_Canela Salon & Spa...	4/9/2007 8:46 AM	DAT File
75_Canela Salon & Spa...	4/30/2006 10:07 PM	DAT File
75_Canela Salon & Spa...	6/16/2006 8:16 PM	DAT File
75_Canela Salon & Spa...	11/15/2006 8:44 PM	DAT File
75_Canela Salon & Spa...	3/8/2007 9:45 PM	DAT File
ALTCUSTNO.DAT	3/28/2007 11:51 AM	DAT File
APCNCLSET.DAT		
APCOLORS.DAT		
APPNOTES.DAT		
APPPARMS.DAT		
APPTCNCL.DAT		
APPWAIT7.DAT		
AUTOSTNDNEW.DA		
AVAILCL.DAT		
BATCHR01.DAT		
BATCHRPT.DAT		

View ▶

Sort By ▶

Group By ▶

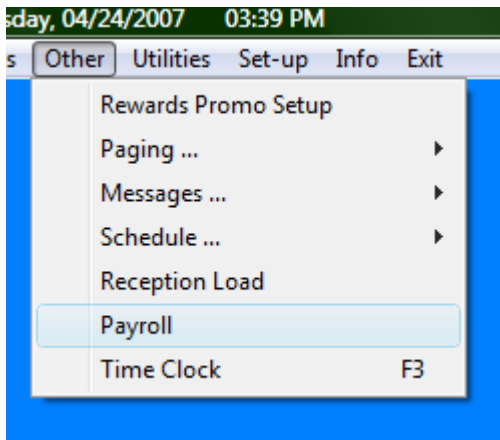
Stack By ▶

Refresh

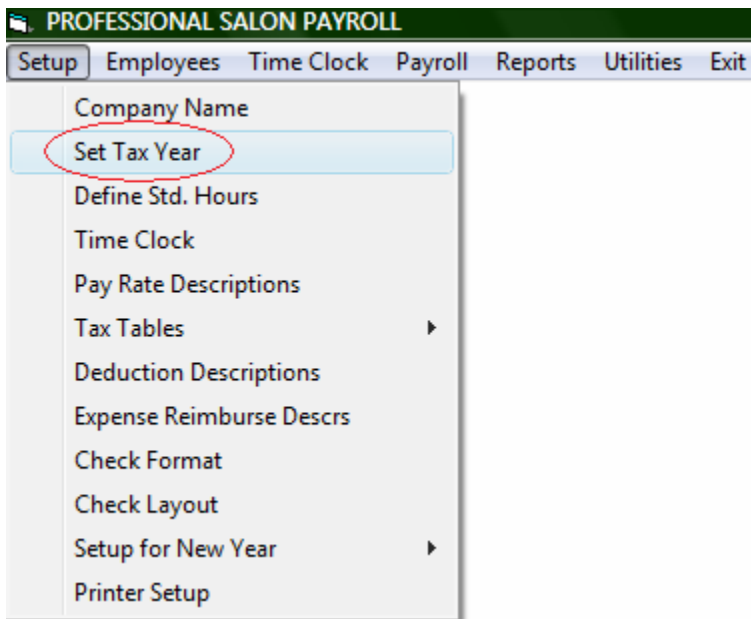
Customize This Folder...

Paste

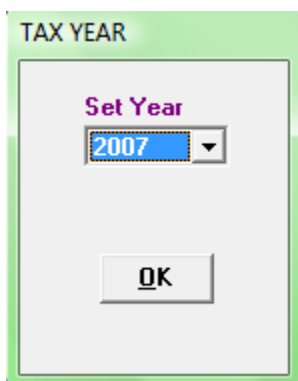
5) From here we are going to exit out of this screen and go into Prosolutions. In the main screen go to Other then Payroll.



6) Now go to Setup and Set Tax Year.



7) The last step is to set your tax year.



You have now successfully installed your Tax Table.

This document was created with Win2PDF available at <http://www.win2pdf.com>.
The unregistered version of Win2PDF is for evaluation or non-commercial use only.
This page will not be added after purchasing Win2PDF.